



# *Minley Manor*

*Exclusive Venue*

Unrivalled ~ Unique ~ Unforgettable



## *Minley Manor*

*Exclusive Venue*



Minley Manor is one of North Hampshire and Surrey's most remarkable and best kept secrets. The grade II listed estate and its 83 acres provides a perfect backdrop for your celebration with far-reaching views across beautiful countryside.

~

Built in an imposing French chateau style in the 1860s, our magnificent Manor house and grounds are a breath-taking back drop to any type of event. Sat high on the hills overlooking Surrey and Hampshire, providing a totally unique space offering complete privacy and unrivalled flexibility.





## *Minley Manor*

*Exclusive Venue*

### Distinctive Weddings ~ Individual Events



At Minley Manor, you can make your special event as individual as you are. Our exclusive use venue offers everything you need to create a totally bespoke occasion you and your guests will always remember.

The perfect blank canvas

~

Our magnificent and unique grade II listed privately owned estate, benefits from extensive grounds and incredible vistas over the Hampshire countryside. A peaceful and tranquil location, just minutes from the M3 and 35 miles from London.

~

Steeped in a long fascinating history, with many notable visitors including Queen Victoria, Princess Margaret, and various Prime Ministers.



## *Minley Manor*

*Exclusive Venue*

### Unique Entertaining Experiences



Minley Manor is committed to excellence as a stunning flexible venue space with many amazing options for private parties, corporate events and festivals. Clients can choose our event planning service or arrange their own bespoke celebration or occasion as they wish.

~

Greet your guests at dusk on the magnificent Wellingtonia Avenue with the breath-taking view of the Manor House in front of you. South facing gardens are perfect for a drinks reception in the evening sun before inviting your guests to the beautiful Orangery, an impressive space for partying the night away

~

When you book your event with us, together with a host of award winning preferred suppliers, we'll endeavour to accommodate all of your needs.





## *Minley Manor*

*Exclusive Venue*

### A Unique Event Venue for Birthdays and Celebrations

Minley Manor is the perfect location for those wanting to celebrate in a unique and unforgettable setting. The property boasts an array of outdoor and indoor spaces, allowing you to entertain your guests whatever the weather.

~

Perfect for outdoor festivals and music events, overlooking the countryside vistas on the South Terrace. The high ceilinged Orangery can accommodate up to 200 guests seated and up to 350 standing for a cocktail party. For smaller more intimate events the Manor House benefits from four function rooms which cater for between 15 to 50 guests.

~

Exclusive use venue hire allows you sole use of the entire grounds for marquees, dance tents and stages, or simply a BBQ with hay bails and picnic blankets. Making your event at Minley Manor a truly distinctive occasion as individual as you are.





## *Minley Manor*

*Exclusive Venue*

### Parties and Corporate Events in the Orangery

In our beautiful light and spacious Orangery, we can cater for up to 200 guests for formal seated dining and 350 people for a cocktail party, with its impressively high, white barrel-vaulted ceiling it is acoustically engineered and cool in Summer months. For larger occasions with dinner and dancing, we can easily accommodate a bespoke marquee, stretch tent or tipi to provide additional entertaining spaces, with an array of versatile outdoor settings. Various options are available on request with our recommended suppliers. If you can imagine it we can create it.





## *Minley Manor*

*Exclusive Venue*

### The Perfect Outdoor Venue—BBQ's and Festivals

If you desire an informal and relaxed outdoor affair such as a barbecue or festival style celebration, you are welcome to bring in your own caterers or food trucks that specialise in buffet style street food and hog roasts. We have a comprehensive list of suppliers at your disposal.

Alternatively, our recommended award winning caterers can provide a fully bespoke food service specifically tailored to your tastes. Also available are complete dining packages which provide all your furniture, crockery, glassware, staff and event management. Prices start at £85 per guest plus vat for 3 courses and canapes.

Your day.... your way.







## *Minley Manor*

*Exclusive Venue*

### Overnight Camping & Glamping

Surprise your guests at dusk with their own glamping village within the adjoining Woodland Gardens to the west of the Manor House. A secluded area with mature trees and shrubs providing shelter and privacy for late night party revellers!

~

Post event camping is available at £30 per pitch, per night and 5m Bell Tents (as shown) accommodating up to 4 guests, can be hired at £250 +VAT, including set up and all bedding.

Toilet & shower facilities can be priced individually on request according to the number of guests. As an indication, a luxury toilet trailer starts at £720.00 + VAT

~

\*Please note, above prices are subject to change and depending on guest numbers we may require the presence of security overnight at £20 per hour





## *Minley Manor*

*Exclusive Venue*

### Exclusive Use — What's Included

- ~ Event Planner on-site with you managing the day and months prior
- ~ Complete privacy of exclusive use for you and your guests
- ~ 480m Wellingtonia Avenue
- ~ Our largest event space The Orangery and south facing gardens
- ~ Located in the Hampshire countryside just 35 minutes from London
- ~ 83 acres of land including woodland and a thatched summerhouse
- ~ Choice of catering options with the flexibility to use your own caterers
- ~ No corkage fee
- ~ Freedom to design your own bespoke event, whatever you can imagine
- ~ Access to the stunning Grade II Listed Historic Manor \*price on application.





# Minley Manor

*Exclusive Venue*

## Exclusive Use Rates

2021	Monday to Wednesday	Thursday	Friday	Saturday & Bank Holiday Sundays	Sunday
January	£2,600	£3,600	£4,500	£5,500	£3,600
February	£2,600	£3,600	£4,500	£5,500	£3,600
March	£3,200	£4,200	£4,900	£5,900	£4,500
April	£3,800	£4,800	£5,900	£7,100	£4,800
May	£3,800	£4,800	£5,900	£7,100	£4,800
June	£3,800	£4,800	£5,900	£7,100	£4,800
July	£3,800	£4,800	£5,900	£7,100	£4,800
August	£3,800	£4,800	£5,900	£7,100	£4,800
September	£3,800	£4,800	£5,900	£7,100	£4,800
October	£3,800	£4,800	£5,900	£7,100	£4,800
November	£3,200	£4,200	£4,900	£5,900	£4,500
December	£3,800	£4,800	£5,900	£7,100	£4,800

Special dates 2021 - please note, these are subject to availability and may not be available during peak times

April - Thursday 1st April £7,000 / Friday 2nd April (Good Friday) £8,500 / Sunday 4th April (Easter Day) £8,500

May - Sunday May 2nd £7,300 / Monday 3rd May £6,000 / Sunday 30th May £7,300 / Monday 31st May £6,000

August - Sunday 29th August £7,300 / Monday 30th August £6,000

December - Sunday 19th – Wednesday 22nd December £7,000 / Wednesday 29th December £7,000 / Friday 31st December 2021 £9,500



## Minley Manor

*Exclusive Venue*

2022	Monday to Wednesday	Thursday	Friday	Saturday & Bank Holiday Sundays	Sunday
January	£2,800	£3,700	£4,600	£5,600	£3,700
February	£2,800	£3,700	£4,600	£5,600	£3,700
March	£3,300	£4,900	£5,000	£6,000	£4,600
April	£3,900	£5,000	£6,000	£7,300	£4,900
May	£3,900	£5,000	£6,000	£7,300	£4,900
June	£3,900	£5,000	£6,000	£7,300	£4,900
July	£3,900	£5,000	£6,000	£7,300	£4,900
August	£3,900	£5,000	£6,000	£7,300	£4,900
September	£3,900	£5,000	£6,000	£7,300	£4,900
October	£3,900	£5,000	£6,000	£7,300	£4,900
November	£3,300	£5,000	£5,000	£6,000	£4,600
December	£3,900	£4,900	£6,000	£7,300	£4,900

Special dates 2022 - please note, these are subject to availability and may not be available during peak times

January - Saturday 1st—Monday 3rd January 2022 £10,000

April - Friday 15th April £9,000 (Good Friday) / Monday 18th April £6,500 (Easter Monday),

May - Monday 2nd May £6,500 / Monday 30th May £6,500

August - Monday 29th August £6,500

December - Sunday 19th – Wednesday 22nd December £8,000 / Tuesday 27th December £9,000 / Saturday 31st December £11,500





# Minley Manor

*Exclusive Venue*

2023	Monday to Wednesday	Thursday	Friday	Saturday & Bank Holiday Sundays	Sunday
January	£3,700	£4,600	£5,500	£6,500	£4,600
February	£3,700	£4,600	£5,500	£6,500	£4,600
March	£4,200	£5,500	£5,900	£6,900	£5,500
April	£4,500	£5,800	£6,700	£8,000	£5,800
May	£5,000	£6,500	£7,750	£9,000	£6,500
June	£5,000	£6,500	£7,750	£9,000	£6,500
July	£5,000	£6,500	£7,750	£9,000	£6,500
August	£5,000	£6,500	£7,750	£9,000	£6,500
September	£5,000	£6,500	£7,750	£9,000	£6,500
October	£4,800	£6,000	£7,250	£8,500	£6,000
November	£4,200	£5,800	£6,700	£7,000	£5,800
December	£4,800	£6,000	£7,250	£8,500	£6,000

Special dates 2023 - please note, these are subject to availability and may not be available during peak times

January - Monday 2nd January 2023 £10,000

April - Friday 7th April £9,000 (Good Friday) / Monday 10th April £6,500 (Easter Monday),

May - Monday 1st May £6,500 / Monday 29th May £6,500

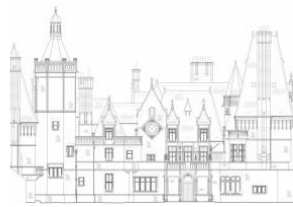
August - Monday 28th August £6,500

December - Sunday 17th -Friday 22nd £8,000 / Saturday 23rd -Sunday 24th £10,000 / Wednesday 27th December £9,000 / Saturday 31st December £11,500









## Minley Manor

*Exclusive Venue*

### Smaller Event Rooms to Hire



**Dining Room - £1500 +vat**

Jacobean in styling with impressive countryside views the Dining Room is perfectly suited to private dining and events up to 50 guests.



**The Green Room - £950 +vat**

Neoclassical in design with its striking stained glass windows the Green Room caters for small dining events and meetings up to 15.

**Drawing Room - £1950 +vat**

The most favoured room in the Manor House panelled in Spanish walnut, with a striking gilded ceiling, the Drawing Room is a superb space for a drinks reception up to 25 guests and with the Bar Room up to 50 guests.



**The Bar Room - £1250 +vat**

Once the Library, the bar area adjoins the Drawing Room enjoying far-reaching views and perfect for serving pre-dinner drinks to your guests.

Caters up to 25 or with the Drawing Room up to 50.



**\*The above Room Hire rates are for part day hire up to 4 hours**



## *Minley Manor*

*Exclusive Venue*

### Frequently Asked Questions

- ~ Can we have exclusive use of the venue? **Yes**
- ~ Do you charge corkage if we supply our own alcohol? **No**
- ~ Can we use our own caterers? **Yes, but we ask you contact our preferred caterers first for their availability \*10% charge may apply**
- ~ From what time can we get access to decorate the venue? **From 7am on the day, possible access day prior providing no other event**
- ~ What time does the event need to finish? **Preferably by midnight. Extension to 1am or later is possible on request.**
- ~ Are there noise restrictions if we have a live band? **No, but we may need to advise the local council as the building is grade II listed.**
- ~ Is confetti allowed? **Yes - biodegradable**
- ~ Are candles allowed? **Yes if contained in glass holders or hurricane vases**
- ~ Are fireworks allowed? **Sadly no, due to the wildlife**
- ~ Is there accommodation on site? **No, but we have a three bedroomed cottage available for weekend hire - price on application.**
- ~ Is there additional accommodation nearby? **Yes we have preferential rates with two nearby hotels and a full list is available on request.**





## *Minley Manor*

*Exclusive Venue*

### The Ideal Location

#### BY CAR

2 miles from Junction 4a on M3

1 Hour from Central London

#### BY TRAIN

50 min from London Waterloo to Fleet

8 min drive from Fleet mainline Station

#### BY AIR

Helicopter landing on site

8 min drive (4 miles) from Farnborough Airport, 35 mins (22 miles) from Heathrow Airport

#### ACCOMMODATION

5 minutes (4 miles) to The Elvetham, 20 min (8 miles) to Four Seasons Hampshire

14 min (6 miles) to The Aviator by Tag Farnborough

**\*\*Full list of available accommodation available on request**



